

(/)

ELEVATE YOUR HAUL WITH ALURA'S STEP FRAME TRAILERS

Discover the perfect blend of strength and versatility with our **Step Frame Trailers**, engineered to meet your most demanding transport needs.

Alura's Step Frame Trailers offer superior load handling, enhanced axle configurations, and customized flooring options — all designed to excel under challenging conditions.

KEY FEATURES

- **High-Strength Steel Chassis:** Durable welded construction for maximum load-bearing capacity.
- **13.6 M Overall Length:** Optimized for a variety of cargo types.
- **Advanced Axle Options:** Choose between Trax or SAF axles with drum or disc brakes.
- **Air Suspension with Lifting Axle:** Ensures a smooth ride and adaptability to different terrains.
- **EBS with Roll Stability:** Enhanced safety features for secure transportation.
- **Customizable Flooring:** Select steel, wood, or a combination to suit your specific requirements.
- **Optional Extendable Platform & Steering Axles:** For added flexibility in handling diverse loads.



BUILT FOR PERFORMANCE

Crafted to the highest standards, Alura's Step Frame Trailers ensure exceptional reliability, low maintenance, and long service life. Every model reflects our commitment to quality and innovation.

Contact us today to learn more and customize your trailer to perfection!

#AluraTrailer #StepFrameTrailer #HeavyDutyTransport #QualityEngineering
#TransportationSolutions #MadeInTurkey



(<https://www.facebook.com/sharer/sharer.php?u=https%3A%2F%2Fwww.aluratrailer.com%2Frecent-projects%2F1054-step-frame-trailers>)



(<https://twitter.com/intent/tweet?url=https%3A%2F%2Fwww.aluratrailer.com%2Frecent-projects%2F1054-step-frame-trailers&text=Step+Frame+Trailers>)



([https://www.linkedin.com/shareArticle?
mini=true&url=https%3A%2F%2Fwww.aluratrailer.com%2Frecent-projects%2F1054-step-frame-](https://www.linkedin.com/shareArticle?mini=true&url=https%3A%2F%2Fwww.aluratrailer.com%2Frecent-projects%2F1054-step-frame-)

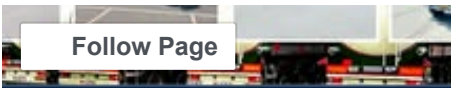
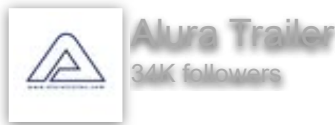
trailers&title=Step+Frame+Trailers)



(<https://www.alura-trailer.com/recent-projects/1054-step-frame-trailers?tmpl=component&print=1>)

[Prev \(/recent-projects/1062-need-a-tipper-trailer-for-sugar-cane\)](/recent-projects/1062-need-a-tipper-trailer-for-sugar-cane)

Next [\(/recent-projects/1046-fuel-tanker-semi-trailers\)](/recent-projects/1046-fuel-tanker-semi-trailers)



OUR ADVANTAGES

- 01 DELIVERY ON TIME**
Alura Trailer ensures timely delivery of every semi-trailer, making punctuality a key part of our commitment to excellence.
- 02 BEST SHIPMENT WAY**
Our logistics experts choose the most efficient and reliable shipment method, tailored to each customer's destination and
- 03 LONG-TERM BUSINESS RELATIONS**
We believe in building lasting partnerships by focusing on trust, reliability, and customer satisfaction with every trailer we deliver.
- 04 CUSTOMER-CENTRIC APPROACH**
At Alura, every decision is made with the customer's needs in mind, ensuring a smooth and responsive experience from order to
- 05 QUALITY YOU CAN TRUST**
Each trailer is produced with precision engineering and strict quality control, guaranteeing performance that lasts for years to come.



Download Catalogue (/images/Catalogues/Alura_Catalogue_2021-S.pdf)

ALURA TRAILER

www.aluratrailer.com

sales@aluratrailer.com

ALURA designs & produce new semi trailers and mobile workshop systems according to needs and orders of its clients as client satisfaction is above everything for our company.

To meet our clients' needs, Alura is a company that continuously keep on following all technological developments both in its own field and in the field of transportation.

The principle that lies under its aims is to provide the best products and best service

TRAINING

Our commitment in each sale is to make certain that clients are properly educated and then trained if necessary (at our location or our customers) to service and maintain the equipments are purchased.

Here again is where we believe our efforts surpass a traditional equipment supplier.

OUTSOURCING / SUBCONTRACTING

One key to ALURA's success is the ability to understand the clients needs, and to put the correct partners and plan in place to ensure clients expectations are exceeded.



[f](#)
[e](#)
[in](#)
@ALURATRAILERS

(/images/Catalogues/Alura_Catalogue_2021-S.pdf)

Copyright © 2025 ALURA TRAILER . All Rights Reserved. Semi Trailers - Mobile Workshops Designed by Sistemim.Com